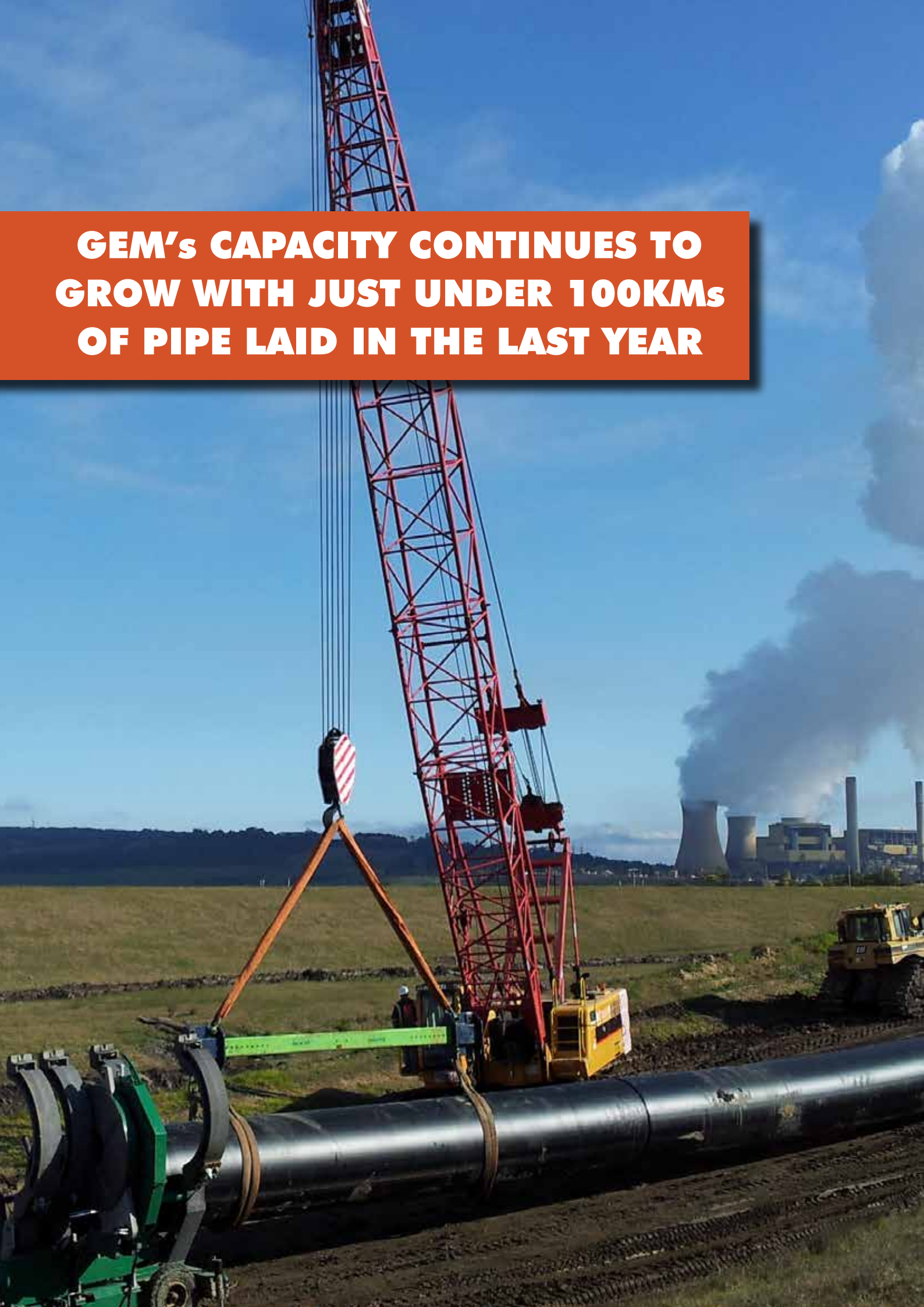




# **CAPABILITY STATEMENT**

**GEM's CAPACITY CONTINUES TO  
GROW WITH JUST UNDER 100KMs  
OF PIPE LAID IN THE LAST YEAR**







**HDPE welding  
services on  
pipelines  
up to 1600mm  
diameter**

## INDUSTRY LEADERS

**GEM Industrial Services is a privately owned company specialising in complex polyethylene pipe fusion services, industrial plumbing and waste water treatment infrastructure.**

GEM Industrial Services has a well proven track record and practical application of industry standards and requirements. Job safety analysis, safe work method statements, environmental plans and detailed methodology plans form the basis of each project undertaken.

We pride ourselves on consistently delivering projects in a professional manner, on schedule, within budget and to the satisfaction of our clients.

GEM industrial Services provide scheduled maintenance programs, project management and design and construct services. GEM Industrial has partnered with reputable industry service providers to deliver total & complete outcomes to our clientele.

At GEM Industrial Services we pride ourselves in the core value that to invest in the most advanced and up to date equipment and methods for the given task is the best investment not only for our future, but for the future and security of our clients operation.

## CAPABILITIES

We have a broad capability which includes:

- HDPE pipe fusion services
- Project Management
- Civil works
- Commercial construction
- Gas
- Electrical services
- Industrial plumbing
- Polymer welding
- Design & Construct
- Scheduled maintenance & service programs
- Pipeline QA certification and testing services.

We take pride in our ability to deliver solutions to our clients anywhere within Australia.

## **QUALITY, SAFETY, AND THE ENVIRONMENT**

GEM Industrial's approach to safety is based on zero harm and a total commitment to ensuring everyone goes home without harm every day. We have rigorous systems in place, committed leadership and emphasis on the importance of individual responsibility.

## **SUSTAINABILITY**

We act today with the future in mind.

We are acutely aware of the lasting presence our work has on the communities in which we operate. We acknowledge our responsibilities within these communities and provide leadership to deliver sustainable outcomes and exceed the expectations of stakeholders.



## **CONTACT**

### **GEM Industrial Services**

2-6 Ashenden Street

PO Box 91

Leongatha VIC 3953

T: +61 3 5662 3373

F: +61 3 5662 3373

E: [enquiries@gemindustrial.com.au](mailto:enquiries@gemindustrial.com.au)

W: [www.gemindustrial.com.au](http://www.gemindustrial.com.au)

ABN: 81 061 862 772